



## ADMINISTRATIVE CIRCULAR

**Commission for the Conservation of the Southern**

**Bluefin Tuna (CCSBT)**

**The 29th Meeting of the Extended Scientific**

**Committee (ESC29)**

September 2 – September 6, 2024

**Taipei, Taiwan**

## **Table of Contents**

- 1. WELCOME AND INTRODUCTION**
- 2. MEETING DATES AND VENUE**
- 3. CONTACT INFORMATION**
- 4. RECOMMENDED ACCOMMODATIONS AND TRANSPORT**
  - 4.1 Recommended Hotels
  - 4.2 Airport to Recommended Hotels
  - 4.3 Recommended Hotels to/from Meeting Venue
- 5. TOURISM AND TRAVEL INFORMATION**
- 6. GENERAL INFORMATION**
  - 6.1 Taipei City
  - 6.2 Weather
  - 6.3 Local time
  - 6.4 Tipping
  - 6.5 Electricity
  - 6.6 Smoking policy
  - 6.7 Useful Telephone Numbers
  - 6.8 Credit Cards
  - 6.9 Currency and ATMs
  - 6.10 Mobile Phone Information
  - 6.11 Restaurants near Chang Yung-Fa Foundation
  - 6.12 MRT

## **1. WELCOME AND INTRODUCTION**

On behalf of the Fisheries Agency of Taiwan, it is with great pleasure and anticipation that we extend a warm welcome to all distinguished participants to the 29th Meeting of the Extended Scientific Committee (ESC29). As the host nation, Taiwan is honored to convene this prestigious gathering, where minds converge, ideas flourish, and collaboration thrives.

This Administrative Circular provides basic information needed to travel around Taipei, and hopefully, it will enable participants to have wonderful memories in Taiwan and ensure the ESC29 to be a successful and smooth meeting.

Additionally, the personnel at the ESC29 Information Desk, situated within the conference venue, are available to provide any information you may require.

Taiwan extends our heartfelt gratitude to all participants for their dedication and contribution to the conservation of Southern Bluefin Tuna conservation. May ESC29 to be characterized by success and productive execution, and Taiwan wishes all participants to have a pleasant visit to Taipei.

## 2. MEETING DATES AND VENUE



The 29th Meeting of the Extended Scientific Committee (ESC29) will commence from **September 2<sup>nd</sup> to September 6<sup>th</sup>, 2024** and will take place at the **Chang Yung-Fa Foundation International Convention Center**, located in the city of Taipei, Taiwan.

Address: [No.11, Zhongshan S. Rd., Taipei City 10048, Taiwan.](#)

## 3. CONTACT INFORMATION

**Taiwan's Fisheries Agency:** Ming-Hui Hish: [minghui@ms1.fa.gov.tw](mailto:minghui@ms1.fa.gov.tw)

**Chang Yung-Fa Foundation:** Joy Hua: [joyhua@cyff.org.tw](mailto:joyhua@cyff.org.tw)

**Evergreen Laurel Hotel (Taipei):** Gordon Lin: [gordonlin@evergreen-hotels.com](mailto:gordonlin@evergreen-hotels.com)

## 4. RECOMMENDED ACCOMMODATIONS AND TRANSPORT

### 4.1 Recommended Hotels

#### 5 Star Hotel:

- 1) [Evergreen Laurel Hotel \(Taipei\) \\*cooperate with Chang Yung-Fa Foundation](#)
  - 2) [Caesar Park Taipei](#)
  - 3) [Sheraton Grand Taipei](#)
  - 4) [Palais De CHINE Hotel Taipei](#)
- #### 4 Star Hotel:
- 5) [Hotel Resonance Hilton Taipei](#)
  - 6) [Cosmos Hotel](#)
  - 7) [Green World Taipei Station](#)

## 4.2 Airport to Recommended Hotels

1. From Taoyuan International Airport to MRT Taipei Main Station, the following link would be useful to search route and price:

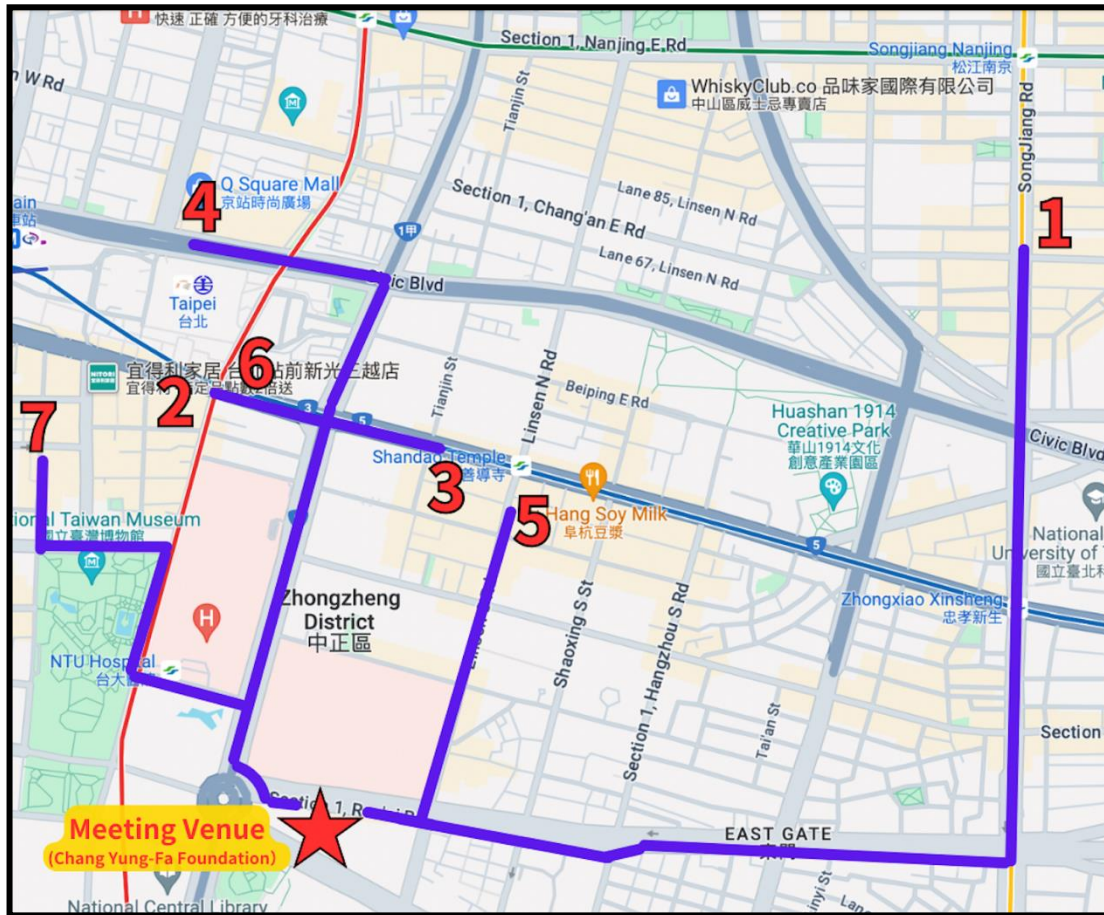
<https://www.taoyuan-airport.com/transportation?lang=en>

2. Directions (From MRT Taipei Main Station to the nearest MRT station):

- 1) [Evergreen Laurel Hotel \(Taipei\)](#) \*cooperate with Chang Yung-Fa Foundation:  
**Tamsui-Xinyi Line (Red Line)**, to Tamsui direction → Get off at **Zhongshan Station** ( 1 stop only) to transfer to **Songshan-Xindain Line (Green Line)**, to Songshan direction → Get off at **Songjiang Nanjing Station** ( 1 stop only) → **Exit 4** will be the closest.
- 2) [Caesar Park Taipei](#):  
Nearest station is **Taipei Main Station** and exit by **Exit Z1**.
- 3) [Sheraton Grand Taipei](#):  
**Bannan Line (Blue Line)**, to Taipei Nangang Exhibition Center direction → Get off at **Shandao Temple Station** ( 1 stop only) → exit by **Exit 2**.
- 4) [Palais De CHINE Hotel Taipei](#)  
Nearest station is **Taipei Main Station** and exit by **Exit Y7**.
- 5) [Hotel Resonance Hilton Taipei](#):  
**Bannan Line (Blue Line)**, to Taipei Nangang Exhibition Center direction → Get off at **Shandao Temple Station** ( 1 stop only) → exit by **Exit 2**.
- 6) [Cosmos Hotel](#):  
Nearest station is **Taipei Main Station** and exit by **Exit M3**.
- 7) [Green World Taipei Station](#):  
Nearest station is **Taipei Main Station** and exit by **Exit Z8 or Z10**.

MRT website: <https://english.metro.taipei/cp.aspx?n=1BE0AF76C79F9A38>

### 4.3 Recommended Hotels to/from Meeting Venue



## 5. TOURISM AND TRAVEL INFORMATION

### National Palace Museum



For about two decades, the National Palace Museum has been integrating digital advancements into its vast collection. Recent years have seen the introduction of

numerous new media art projects at the NPM, showcasing significant pieces from its collection and advocating for cultural inclusivity.

Alongside the NPM's advanced "Scroll Painting Animation" series, the outcomes of the painting and calligraphy virtual reality initiative, finalized in 2016, are now utilized for educational purposes both within and beyond the museum premises. Through video displays, sound enhancements, and virtual reality applications, priceless artifacts have been reimagined into accessible forms of new media art. Some productions even enliven figures and scenes from classical paintings, offering immersive experiences of bygone eras.

The National Palace Museum, characterized by its traditional Chinese palace-style architecture with emerald green tiles and yellow walls, houses the world's most extensive and exquisite collection of Chinese cultural treasures.

Location: <https://maps.app.goo.gl/EGSCc4KavHEFuwVZ7>

For more information: <https://www.npm.gov.tw/index.aspx?!=2>

### **Taipei 101**





The urban skyline of Taipei has never been more stunning! Taipei 101 provides an unparalleled 360° view of Taipei City's dynamic energy. Travelers from around the globe flock here to savor the essence of Taiwan and embrace life on the island.

The tuned mass damper, a crucial architectural element ensuring Taipei 101's stability during strong winds and earthquakes, holds the distinction of being the world's largest and heaviest skyscraper damper, as well as the first to be accessible to the public.

Perched on the 91st floor, 390 meters above the bustling streets below, the outdoor observation deck offers a perspective that is typically breezier and cooler than ground level. Gaze upwards to admire the towering spire of Taipei 101, soaring to 580 meters above street level (please note: the outdoor observation deck may close during inclement weather).

Location: <https://maps.app.goo.gl/PrYs3qc14ipRMSHu7>

For more information: <https://www.taipei-101.com.tw/en/>

### **Chiang Kai-shek Memorial Hall**





Chiang Kai-shek Memorial Hall, certified as an environmental education facility, occasionally hosts horticulture and gardening workshops. The Hoop Pine Trail within the Memorial Hall's "Tiger Back Zone" comes highly recommended, providing natural shade and being regularly refreshed by cool breezes, evoking the ambiance of a genuine forest path. Immerse yourself in the symphony of cicadas buzzing and birds chirping, finding a moment of serenity in this tranquil setting.

Encompassing 25 hectares, the Memorial Hall complex features the National Theater and National Concert Hall. The Memorial Hall itself serves as a venue for a rotating array of art exhibitions and cultural events. Additionally, delve into the history gallery to deepen your understanding of former ROC President Chiang Kai-shek and Taiwan's modern history.

Location: <https://maps.app.goo.gl/yUmBtukyG2ScSRCa7>

For more information: <https://www.cksmh.gov.tw/en/>

### **Shilin Night Market**



Shilin Night Market stands out as one of the most well-organized and popular

night markets, divided into two main sections for ease of exploration. One area extends from the traditional Yangming Theatre to the Chicheng Temple along Danan Rd, while the other is a bustling centralized food court drawing large crowds with its diverse array of snacks. Within the market's vibrant atmosphere, visitors can wander between stores offering a wide selection of clothing and accessories, often at negotiable prices.

Moreover, Shilin Night Market is renowned for its local delicacies, many of which are exclusive to this location. Visitors can indulge in a plethora of authentic Taiwanese dishes, including Sausage Wrapped in Glutinous Rice, Stir-fried Squids, Oyster Omelets, Shilin Super Size Sausages, Ribs Stewed in Chinese Herbal Medicine, Shanghai Bun, Qinwaxiadan, Scallion Pancakes, Paopao Ice, Huge Chicken Cutlet, and many more, each bursting with unique flavors that capture the essence of the region.

Location: <https://maps.app.goo.gl/D5iSintYtYcsap2MA>

For more information:

<https://www.travelking.com.tw/eng/tourguide/taipei/shilin-night-market.html>

## **6. GENERAL INFORMATION**

### **6.1 Taipei City**

With a population of over 2.7 million, Taipei is the capital city of Taiwan and the economic, political, and cultural heart of the island. Nestled in the northern part of Taiwan, Taipei sits in a basin surrounded by mountains, with the Tamsui River flowing along its western edge.

Historically, Taipei began to take prominence as a major city during the late 19th century under Qing Dynasty rule, and it continued to grow under Japanese rule from 1895 to 1945. It officially became the capital of Taiwan in 1949, following the retreat of the Kuomintang to the island after the Chinese Civil War.

Today, Taipei is a vibrant city known for its lively street-food scene and bustling night markets. The city preserves a rich blend of Chinese heritage alongside Japanese colonial influences, evident in its architecture and cultural festivals. Key historical sites include the grand Chiang Kai-shek Memorial Hall and the ancient Longshan Temple.

Culturally diverse, Taipei offers a broad array of entertainment and cultural activities. It is particularly renowned for its innovative culinary scene, which melds traditional Taiwanese dishes with global influences, showcasing a rich variety of flavors and ingredients.

## 6.2 Weather

- Taipei has a humid subtropical climate. The average temperature in summer is around 29°C, and as for winter, it is around 16°C. Summer is hot and humid with occasional rain storms and typhoons, while winter is short and generally warm and foggy.

## 6.3 Local Time

- Local Time: UTC/GMT + 8hrs.

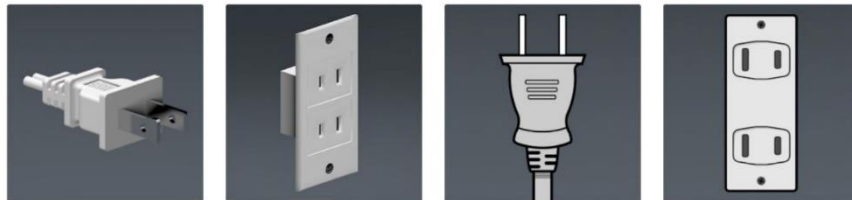
## 6.4 Tipping

- Service charge is included in most restaurants and hotels. However, rounding up bills up to 10% is always appreciated.

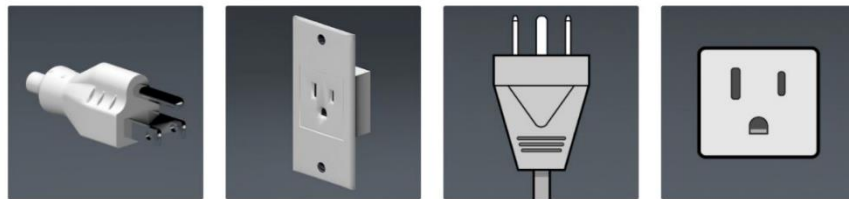
## 6.5 Electricity

- Taiwan operates on a 110V supply voltage and 60Hz. The power plugs and sockets are of type A and B.

Type A



Type B



## 6.6 Smoking policy

- Smoking is banned in all indoor public places. However, there are some designated smoking areas.

## 6.7 Emergency and Useful Telephone Numbers

- Police ..... 110
- Fire & Ambulance ..... 119
- International Community Service Hotline (English-speaking/24 hours/Toll-Free) ..... 0800-024-111 Press 「2」 for English Service

## 6.8 Credit Cards

- **Visa, MasterCard, American Express,** and other major credit cards are

widely accepted at hotels, restaurants, and shops. However, some restaurants and small shops accept only cash payments.

## 6.9 Currency and ATMs

- The New Taiwan dollar is the official currency of Taiwan. The currency code is TWD and this is commonly abbreviated as NT\$ or NTD\$. The most commonly used denominations are the NTD\$100, NTD\$500, and NTD\$1000 bills. The coins used are the NTD\$50, NTD\$10, NTD\$5, and NTD\$1 denominations. (Please be aware that there're NTD\$200 and NTD\$2000 bills, but they aren't commonly used.)
- Foreign currencies can be exchanged at banks, exchange bureaus, shopping malls and hotels. Please be mindful that **NOT** all shopping malls and hotels provide exchange service.
- You may find ATMs in convenience stores, supermarkets, and shopping malls.

## 6.10 SIM card Information

- Mobile phone centers at any Taiwan airport.
- Any mobile phone retail stores in major cities across Taiwan.
- Order through Klook: <https://www.klook.com/en-US/wifi-sim-card/?region=27-Taiwan&>

## 6.11 Restaurants near Chang Yung-Fa Foundation

- **Café Hatsu**

Location: [1<sup>st</sup> floor of Chang Yung-Fa Foundation](#).

Opening hours: Coffee & dessert (8:30 AM - 5:00 PM), Daily specials (11:30 A.M. - 2:00 P.M). Please be aware that it **DOES NOT** open on Mondays.

Price Range: NT\$70~ NT\$280

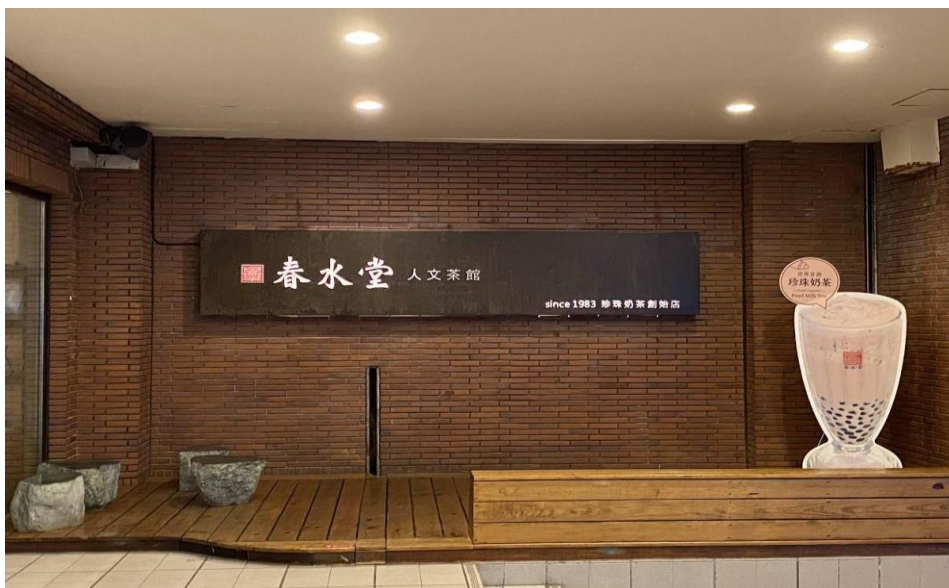


- **Chun Shui Tang (Zhongzheng Branch)**

Location: [National Concert Hall, No. 21-1, Zhongshan S Rd, Zhongzheng District](#)

Opening hours: 11:30 AM - 8:50 PM

Price Range: NT\$90~ NT\$330



- **Allegro Light Meal**

Location: [National Concert Hall, No. 21-1, Zhongshan S Rd, Zhongzheng District](#)

Opening hours: 11:30 AM - 8:50 PM

Price Range: NT\$90~ NT\$310



## 6.12 MRT



MetroMan Taipei: A great app to download if you are traveling around Taipei by MRT. It's available on both Apple and Android.

Apple:



Android:





Nearest MRT station to the ESC meeting venue is **NTU Hospital**

